



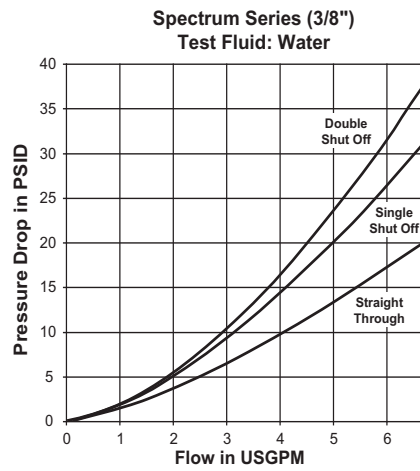
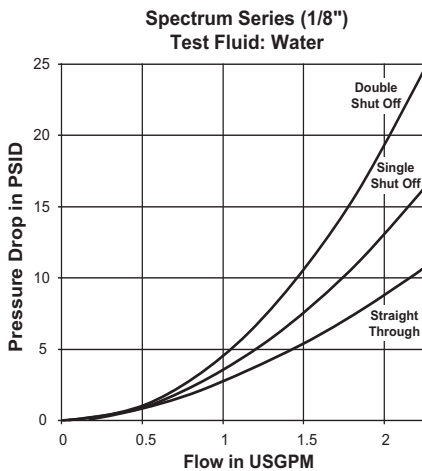
Applications

Parker's Spectrum™ Series couplers are the most advanced engineered thermoplastic couplings available. Spectrum Series couplings combine compact size, high flow capability, and light weight design to meet a broad range of coupling applications. Three material combinations allow the couplings to be used in markets as diverse as chemical processing, automation equipment, semi-conductor and food processing. Spectrum Series can be used in many applications previously reserved for stainless steel couplings.

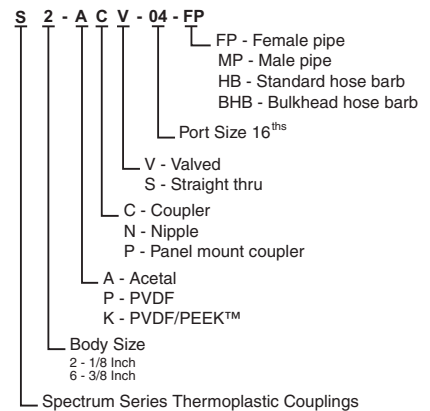
Features

- Excellent Chemical Compatibility
- Three Material Combinations: Acetal/SS, PVDF/SS and PVDF/PEEK™
- High Flow Capacity
- Easy Push-To-Connect Operation
- Available Valved and Unvalved
- Flexible Modular Design
- Four Point 360° Locking Mechanism
- Temperatures Up To 250° F
- Panel Mounting Option

Performance



How To Order

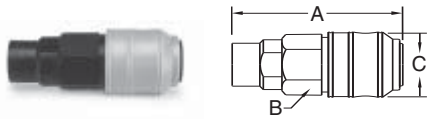


Specifications

	Acetal/SS (black with grey sleeve)		PVDF/SS (translucent with green sleeve)		PVDF/PEEK™ (translucent)
Body Size	1/8	3/8	1/8	3/8	3/8
Pressure Range	0-145 psi (0-10 bar)	0-145 psi (0-10 bar)	0-115 psi (0-8 bar)	0-115 psi (0-8 bar)	15-115 psi (1-8 bar)
Temperature Range	0° F to 180° F (-20° C to +80° C)	0° F to 180° F (-20° C to +80° C)	0° F to 250° F (-20° C to +120° C)	0° F to 250° F (-20° C to +120° C)	0° F to 250° F (-20° C to +120° C)
Rated Flow	1.5 GPM (5.6 lpm)	4.5 GPM (17 lpm)	1.5 GPM (5.6 lpm)	4.5 GPM (17 lpm)	4.5 GPM (17 lpm)
Body Material	Acetal	Acetal	PVDF	PVDF	PVDF
Spring Material	316 SS	316 SS	316 SS	316 SS	PEEK™
Seal Material	Nitrile	Nitrile	Fluorocarbon	Fluorocarbon	Fluorocarbon

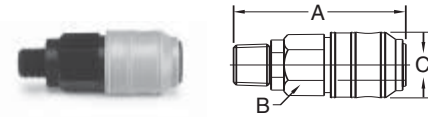
Couplers

Female Pipe



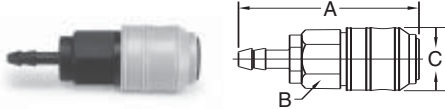
Body Size (in.)	Acetal* Part No.	PVDF* Part No.	PVDF/PEEK™* Part No.	Port NPT	Overall Length	Hex	Largest	
						Size	Diameter	
						A	B	C
1/8	S2-ACV-02-FP	S2-PCV-02-FP	—	1/8-27	2.15	.67	.82	
1/8	S2-ACV-04-FP	S2-PCV-04-FP	—	1/4-18	2.34	.67	.82	
3/8	S6-ACV-04-FP	S6-PCV-04-FP	S6-KCV-04-FP	1/4-18	2.63	.82	1.02	
3/8	S6-ACV-06-FP	S6-PCV-06-FP	S6-KCV-06-FP	3/8-18	2.63	.82	1.02	
3/8	S6-ACV-08-FP	S6-PCV-08-FP	S6-KCV-08-FP	1/2-14	3.10	.82	1.02	

Male Pipe



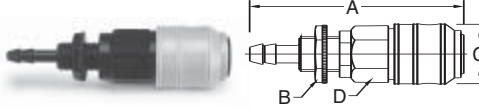
Body Size (in.)	Acetal* Part No.	PVDF* Part No.	PVDF/PEEK™* Part No.	Port NPT	Overall Length	Hex	Largest	
						Size	Diameter	
						A	B	C
1/8	S2-ACV-02-MP	S2-PCV-02-MP	—	1/8-27	2.04	.67	.82	
1/8	S2-ACV-04-MP	S2-PCV-04-MP	—	1/4-18	2.15	.67	.82	
3/8	S6-ACV-04-MP	S6-PCV-04-MP	S6-KCV-04-MP	1/4-18	2.90	.82	1.02	
3/8	S6-ACV-06-MP	S6-PCV-06-MP	S6-KCV-06-MP	3/8-18	2.77	.82	1.02	
3/8	S6-ACV-08-MP	S6-PCV-08-MP	S6-KCV-08-MP	1/2-14	3.10	.82	1.02	

Hose Barb



Body Size (in.)	Acetal* Part No.	PVDF* Part No.	PVDF/PEEK™* Part No.	Hose I.D.	Overall Length	Hex	Largest	
						Size	Diameter	
						A	B	C
1/8	S2-ACV-03-HB	S2-PCV-03-HB	—	3/16 (4 mm)	2.34	.67	.82	
1/8	S2-ACV-04-HB	S2-PCV-04-HB	—	1/4 (6 mm)	2.34	.67	.82	
3/8	S6-ACV-04-HB	S6-PCV-04-HB	S6-KCV-04-HB	1/4 (6 mm)	3.19	.82	1.02	
3/8	S6-ACV-06-HB	S6-PCV-06-HB	S6-KCV-06-HB	3/8 (9 mm)	3.19	.82	1.02	
3/8	S6-ACV-08-HB	S6-PCV-08-HB	S6-KCV-08-HB	1/2 (13 mm)	3.31	.82	1.02	

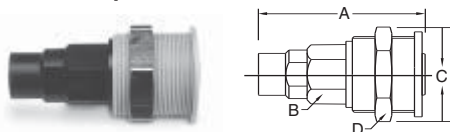
Bulkhead Hose Barb



Body Size (in.)	Acetal* Part No.	PVDF* Part No.	PVDF/PEEK™* Part No.	Hose I.D.	Overall Length	Hex	Largest	Bulkhead	
						Size	Diameter	Hex	
						A	B	C	D
1/8	S2-ACV-03-BHB	S2-PCV-03-BHB	—	3/16 (4 mm)	2.89	.67	.82	.67	
1/8	S2-ACV-04-BHB	S2-PCV-04-BHB	—	1/4 (6 mm)	2.89	.67	.82	.67	

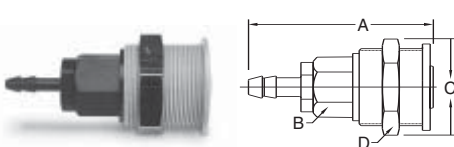
Panel Mount Couplers

Female Pipe



Body Size (in.)	Acetal* Part No.	PVDF* Part No.	PVDF/PEEK™* Part No.	Hose I.D.	Overall Length	Hex	Largest	Bulkhead	
						Size	Diameter	Hex	
						A	B	C	D
1/8	S2-APV-02-FP	S2-PPV-02-FP	—	1/8-27	2.04	.67	1.10	1.06	
1/8	S2-APV-04-FP	S2-PPV-04-FP	—	1/4-18	2.16	.67	1.10	1.06	

Hose Barb

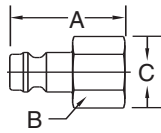


Body Size (in.)	Acetal* Part No.	PVDF* Part No.	PVDF/PEEK™* Part No.	Hose I.D.	Overall Length	Hex	Largest	Bulkhead	
						Size	Diameter	Hex	
						A	B	C	D
1/8	S2-APV-03-HB	S2-PPV-03-HB	—	3/16 (4 mm)	2.34	.67	1.10	1.06	
1/8	S2-APV-04-HB	S2-PPV-04-HB	—	1/4 (6 mm)	2.34	.67	1.10	1.06	

* NOTE: To Order Unvalved Coupler replace "V" with an "S".

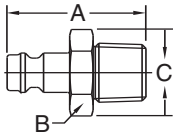
Nipples – Unvalved

Female Pipe



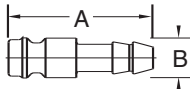
Body Size (in.)	Acetal Part No.	PVDF Part No.	PVDF/PEEK™ Part No.	Port NPT	Overall Length	Hex Size	Largest Diameter
					A	B	C
1/8	S2-ANS-02-FP	S2-PNS-02-FP	—	1/8-27	1.02	.55	.62
1/8	S2-ANS-04-FP	S2-PNS-04-FP	—	1/4-18	1.18	.67	.76
3/8	S6-ANS-04-FP	S6-PNS-04-FP	—	1/4-18	1.52	.67	.73
3/8	S6-ANS-06-FP	S6-PNS-06-FP	—	3/8-18	1.52	.83	.91
3/8	S6-ANS-08-FP	S6-PNS-08-FP	—	1/2-14	1.68	.98	1.09

Male Pipe



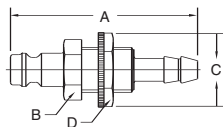
Body Size (in.)	Acetal Part No.	PVDF Part No.	PVDF/PEEK™ Part No.	Port NPT	Overall Length	Hex Size	Largest Diameter
					A	B	C
1/8	S2-ANS-02-MP	S2-PNS-02-MP	—	1/8-27	1.08	.55	.62
1/8	S2-ANS-04-MP	S2-PNS-04-MP	—	1/4-18	1.24	.67	.76
3/8	S6-ANS-04-MP	S6-PNS-04-MP	—	1/4-18	1.64	.67	.73
3/8	S6-ANS-06-MP	S6-PNS-06-MP	—	3/8-18	1.64	.83	.91
3/8	S6-ANS-08-MP	S6-PNS-08-MP	—	1/2-14	1.83	.94	1.04

Hose Barb



Body Size (in.)	Acetal Part No.	PVDF Part No.	PVDF/PEEK™ Part No.	Hose I.D.	Overall Length	Largest Diameter
					A	B
1/8	S2-ANS-03-HB	S2-PNS-03-HB	—	3/16 (4 mm)	1.26	.34
1/8	S2-ANS-04-HB	S2-PNS-04-HB	—	1/4 (6 mm)	1.26	.34
3/8	S6-ANS-04-HB	S6-PNS-04-HB	—	1/4 (6 mm)	1.86	.71
3/8	S6-ANS-06-HB	S6-PNS-06-HB	—	3/8 (9 mm)	1.87	.71
3/8	S6-ANS-08-HB	S6-PNS-08-HB	—	1/2 (13 mm)	1.99	.71

Bulkhead Hose Barb

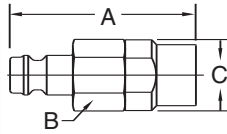


Body Size (in.)	Acetal Part No.	PVDF Part No.	PVDF/PEEK™ Part No.	Hose I.D.	Overall Length	Hex Size	Largest Diameter	Bulkhead Hex
					A	B	C	D
1/8	S2-ANS-03-BHB	S2-PNS-03-BHB	—	3/16 (4 mm)	1.97	.55	.64	.55
1/8	S2-ANS-04-BHB	S2-PNS-04-BHB	—	1/4 (6 mm)	1.97	.55	.77	.67

C Thermoplastics

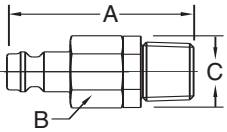
Nipples –Valved

Female Pipe



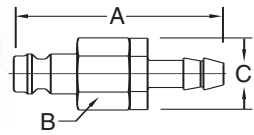
Body Size (in.)	Acetal Part No.	PVDF Part No.	PVDF/PEEK™ Part No.	Port NPT	Overall Length	Hex Size	Largest Diameter
					A	B	C
1/8	S2-ANV-02-FP	S2-PNV-02-FP	—	1/8-27	1.61	.67	.76
1/8	S2-ANV-04-FP	S2-PNV-04-FP	—	1/4-18	1.80	.67	.76
3/8	S6-ANV-04-FP	S6-PNV-04-FP	S6-KNV-04-FP	1/4-18	2.02	.83	.91
3/8	S6-ANV-06-FP	S6-PNV-06-FP	S6-KNV-06-FP	3/8-18	2.02	.83	.91
3/8	S6-ANV-08-FP	S6-PNV-08-FP	S6-KNV-08-FP	1/2-14	2.49	.83	.91

Male Pipe



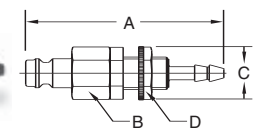
Body Size (in.)	Acetal Part No.	PVDF Part No.	PVDF/PEEK™ Part No.	Port NPT	Overall Length	Hex Size	Largest Diameter
					A	B	C
1/8	S2-ANV-02-MP	S2-PNV-02-MP	—	1/8-27	1.49	.67	.76
1/8	S2-ANV-04-MP	S2-PNV-04-MP	—	1/4-18	1.80	.67	.76
3/8	S6-ANV-04-MP	S6-PNV-04-MP	S6-KNV-04-MP	1/4-18	2.24	.83	.91
3/8	S6-ANV-06-MP	S6-PNV-06-MP	S6-KNV-06-MP	3/8-18	2.16	.83	.91
3/8	S6-ANV-08-MP	S6-PNV-08-MP	S6-KNV-08-MP	1/2-14	2.49	.83	.91

Hose Barb



Body Size (in.)	Acetal Part No.	PVDF Part No.	PVDF/PEEK™ Part No.	Hose I.D.	Overall Length	Hex Size	Largest Diameter
					A	B	C
1/8	S2-ANV-03-HB	S2-PNV-03-HB	—	3/16 (4 mm)	1.80	.67	.76
1/8	S2-ANV-04-HB	S2-PNV-04-HB	—	1/4 (6 mm)	1.80	.67	.76
3/8	S6-ANV-04-HB	S6-PNV-04-HB	S6-KNV-04-HB	1/4 (6 mm)	2.59	.82	.91
3/8	S6-ANV-06-HB	S6-PNV-06-HB	S6-KNV-06-HB	3/8 (9 mm)	2.59	.82	.91
3/8	S6-ANV-08-HB	S6-PNV-08-HB	S6-KNV-08-HB	1/2 (13 mm)	2.71	.82	.91

Bulkhead Hose Barb



Body Size (in.)	Acetal Part No.	PVDF Part No.	PVDF/PEEK™ Part No.	Hose I.D.	Overall Length	Hex Size	Largest Diameter	Bulkhead Hex
					A	B	C	D
1/8	S2-ANV-03-BHB	S2-PNV-03-BHB	—	3/16 (4 mm)	2.35	.67	.76	.55
1/8	S2-ANV-04-BHB	S2-PNV-04-BHB	—	1/4 (6 mm)	2.35	.67	.76	.55