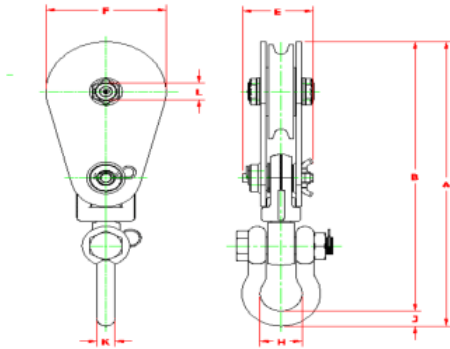


**Single Sheave With Shackle**



MODEL NO.	STANDARD WIRE ROPE SIZE	MAX. ALLOW OPTIONAL	WT	A	B	E	F	H	J	K	L
<b>2 MT</b>											
SB 2S 3BS	5/16 – 3/8	3/8	5	9.90	9.40	2.72	3.20	1.25	0.50	0.44	0.75
<b>4 MT</b>											
SB 4S 4BS	3/8 – 1/2	3/4	16	14.68	13.80	3.63	4.76	2.00	0.88	0.88	1.00
SB 4S 4RS	3/8 – 1/2	3/4	16	14.68	13.80	3.63	4.76	2.00	0.88	0.88	1.00
SB 4S 6BS	3/8 – 1/2	3/4	21	16.86	15.98	3.63	6.26	2.00	0.88	0.88	1.00
SB 4S 6RS	3/8 – 1/2	3/4	21	16.86	15.98	3.63	6.26	2.00	0.88	0.88	1.00
SB 4S 8BS	3/8 – 1/2	3/4	26	18.86	17.98	3.63	8.26	2.00	0.88	0.88	1.00
SB 4S 8RS	3/8 – 1/2	3/4	26	18.86	17.98	3.63	8.26	2.00	0.88	0.88	1.00
SB 4S 10BS	3/8 – 1/2	3/4	35	20.92	20.04	3.63	10.26	2.00	0.88	0.88	1.25
SB 4S 10RS	3/8 – 1/2	3/4	35	20.92	20.04	3.63	10.26	2.00	0.88	0.88	1.25
SB 4S 12BS	3/8 – 1/2	7/8	42	22.92	22.04	3.63	12.26	2.00	0.88	0.88	1.25
SB 4S 12RS	3/8 – 1/2	7/8	44	22.92	22.04	3.63	12.26	2.00	0.88	0.88	1.25
SB 4S 14BS	3/8 – 1/2	3/4	51	24.92	24.04	3.63	14.26	2.00	0.88	0.88	1.25
SB 4S 14RS	3/8 – 1/2	3/4	53	24.92	24.04	3.63	14.26	2.00	0.88	0.88	1.25
<b>8 MT</b>											
SB 8S 6BS	5/8 – 3/4	1	29	19.18	18.18	4.02	6.24	2.31	1.00	1.00	1.50
SB 8S 6RS	5/8 – 3/4	1	32	19.18	18.18	4.02	6.24	2.31	1.00	1.00	1.50
SB 8S 8BS	5/8 – 3/4	7/8	37	21.18	20.18	4.02	8.24	2.31	1.00	1.00	1.50
SB 8S 8RS	5/8 – 3/4	7/8	36	21.18	20.18	4.02	8.24	2.31	1.00	1.00	1.50
SB 8S 10BS	5/8 – 3/4	3/4	43	23.18	22.18	4.02	10.24	2.31	1.00	1.00	1.50
SB 8S 10RS	5/8 – 3/4	3/4	42	23.18	22.18	4.02	10.24	2.31	1.00	1.00	1.50
SB 8S 12BS	5/8 – 3/4	7/8	54	25.21	24.21	4.02	12.18	2.31	1.00	1.00	1.50
SB 8S 12RS	5/8 – 3/4	7/8	57	25.21	24.21	4.02	12.18	2.31	1.00	1.00	1.50
SB 8S 14BS	5/8 – 3/4	7/8	66	27.21	26.21	4.02	14.18	2.31	1.00	1.00	1.50
SB 8S 14RS	5/8 – 3/4	7/8	66	27.21	26.21	4.02	14.18	2.31	1.00	1.00	1.50
<b>12 MT</b>											
SB 12S 6BS	3/4 – 7/8	1 1/8	51	22.25	21.00	4.85	6.68	2.87	1.25	1.25	2.00
SB 12S 6RS	3/4 – 7/8	1 1/8	51	22.25	21.00	4.85	6.68	2.87	1.25	1.25	2.00
SB 12S 8BS	3/4 – 7/8	1 1/8	61	23.81	22.56	4.85	8.24	2.87	1.25	1.25	2.00
SB 12S 8RS	3/4 – 7/8	1 1/8	61	23.81	22.56	4.85	8.24	2.87	1.25	1.25	2.00
SB 12S 10BS	3/4 – 7/8	1 1/8	74	25.81	24.56	4.85	10.24	2.87	1.25	1.25	2.00
SB 12S 10RS	3/4 – 7/8	1 1/8	76	25.81	24.56	4.85	10.24	2.87	1.25	1.25	2.00
SB 12S 12BS	3/4 – 7/8	1 1/8	95	27.81	26.56	4.85	12.24	2.87	1.25	1.25	2.00
SB 12S 12RS	3/4 – 7/8	1 1/8	92	27.81	26.56	4.85	12.24	2.87	1.25	1.25	2.00
SB 12S 14BS	3/4 – 7/8	1 1/8	108	29.81	28.56	4.85	14.24	2.87	1.25	1.25	2.00
SB 12S 14RS	3/4 – 7/8	1 1/8	107	29.81	28.56	4.85	14.24	2.87	1.25	1.25	2.00
SB 12S 16BS	3/4 – 7/8	7/8	130	31.97	30.72	4.85	16.36	2.87	1.25	1.25	2.00
SB 12S 16RS	3/4 – 7/8	7/8	135	31.97	30.72	4.85	16.36	2.87	1.25	1.25	2.00
<b>15 MT</b>											
SB 15S 8BS	3/4 – 7/8	1 1/8	62	23.81	22.56	4.85	8.24	2.87	1.25	1.25	2.50
SB 15S 8RS	3/4 – 7/8	1 1/8	60	23.81	22.56	4.85	8.24	2.87	1.25	1.25	2.00
SB 15S 10BS	3/4 – 7/8	1 1/8	75	25.81	24.56	4.85	10.24	2.87	1.25	1.25	2.50
SB 15S 10RS	3/4 – 7/8	1 1/8	84	25.81	24.56	4.85	10.24	2.87	1.25	1.25	2.00

SB 15S 12BS	3/4 – 7/8	1 1/8	95	27.81	26.56	4.85	12.24	2.87	1.25	1.25	2.50
SB 15S 12RS	3/4 – 7/8	1 1/8	91	27.81	26.56	4.85	12.24	2.87	1.25	1.25	2.00
SB 15S 14BS	3/4 – 7/8	1 1/8	106	29.81	28.56	4.85	14.24	2.87	1.25	1.25	2.50
SB 15S 14RS	3/4 – 7/8	1 1/8	106	29.81	28.56	4.85	14.24	2.87	1.25	1.25	2.00
SB 15S 16BS	3/4 – 7/8	7/8	134	31.97	30.72	4.85	16.36	2.87	1.25	1.25	2.50
SB 15S 16RS	3/4 – 7/8	7/8	134	31.97	30.72	4.85	16.36	2.87	1.25	1.25	2.00
20 MT											
SB 20S 8BS	1 – 1 1/8	1 1/8	95	28.78	27.15	5.83	8.24	4.00	1.63	1.63	2.25
SB 20S 8RS	1 – 1 1/8	1 1/8	95	28.78	27.15	5.83	8.24	4.00	1.63	1.63	2.25
SB 20S 10BS	1 – 1 1/8	1 1/8	109	30.78	29.15	5.83	10.24	4.00	1.63	1.63	2.25
SB 20S 10RS	1 – 1 1/8	1 1/8	111	30.78	29.15	5.83	10.24	4.00	1.63	1.63	2.25
SB 20S 12BS	1 – 1 1/8	1 1/4	119	32.78	31.15	5.83	12.24	4.00	1.63	1.63	2.25
SB 20S 12RS	1 – 1 1/8	1 1/4	118	32.78	31.15	5.83	12.24	4.00	1.63	1.63	2.25
SB 20S 14BS	1 – 1 1/8	1 3/8	130	34.78	33.15	5.83	14.24	4.00	1.63	1.63	2.25
SB 20S 14RS	1 – 1 1/8	1 3/8	136	34.78	33.15	5.83	14.24	4.00	1.63	1.63	2.25
SB 20S 16BS	1 – 1 1/8	1 1/8	161	36.78	35.15	5.83	16.24	4.00	1.63	1.63	2.25
SB 20S 16RS	1 – 1 1/8	1 1/8	164	36.78	35.15	5.83	16.24	4.00	1.63	1.63	2.25
SB 20S 18BS	1 – 1 1/8	1 1/8	186	38.78	37.15	5.83	18.24	4.00	1.63	1.63	3.00
SB 20S 18RS	1 – 1 1/8	1 1/8	190	38.78	37.15	5.83	18.24	4.00	1.63	1.63	3.00
30 MT											
SB 30S 20BS	1 1/8 – 1 1/4	1 3/8	296	44.26	42.64	5.80	20.24	4.00	1.63	1.63	3.50
SB 30S 20RS	1 1/8 – 1 1/4	1 3/8	301	44.26	42.64	5.80	20.24	4.00	1.63	1.63	3.50
SB 30S 24BS	1 1/8 – 1 1/4	1 3/8	370	48.26	46.64	5.80	24.24	4.00	1.63	1.63	3.50
SB 30S 24RS	1 1/8 – 1 1/4	1 3/8	375	48.26	46.64	5.80	24.24	4.00	1.63	1.63	3.50