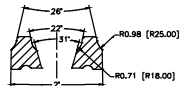
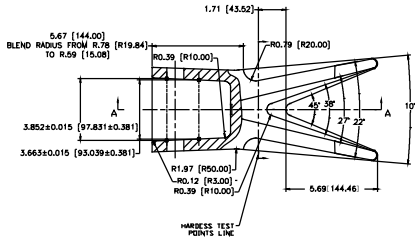
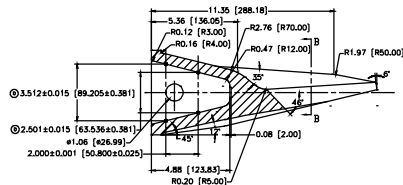
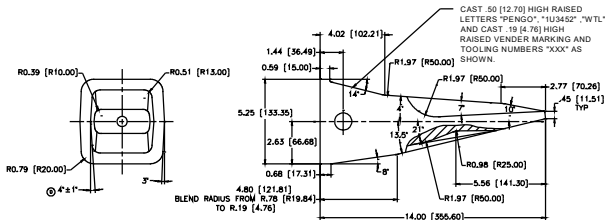


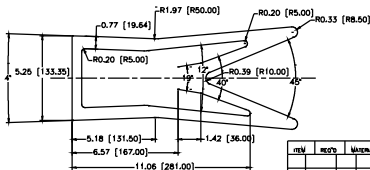
HARDNESS TEST POINTS



SECTION B-B



SECTION A-A



- NOTES: (UNLESS OTHERWISE SPECIFIED)
1. ALL FILLETS AND ROUNDS - .13[3.18]
 2. ALL DRAFT ANGLES ARE 5°
 3. MATERIAL: P11
 4. ESTIMATED WEIGHT: 32.47LBS [14.74kg].
 5. PAINT TOOTH YELLOW AFTER HEAT TREAT.

REV	REQD	MATERIAL / PART DESCRIPTION	BILL OF MATERIAL		MATL/PART NO.	QTY	QTY	
			THIS DRAWING IS PROPERTY OF PENCO CORPORATION THE PATENT RIGHTS ARE RESERVED NO USE THEREOF SHALL BE MADE AFTER THIS DRAWING IS OBSOLETE NO PARTS LISTING OR REPRODUCTION OF THIS DRAWING IS TO BE MADE WITHOUT THE WRITTEN PERMISSION OF PENCO CORPORATION EXCEPT FOR THE PURPOSES SPECIFIED IN THIS DRAWING.		 PENCO CORPORATION WETLE BREAKING NEW! GROUND			
			TOOTH, BKT [U-3452WTL]		DATE	DRAWN	CHECKED	SCALE
			11/19/93 Xu Jun YZ/YYD FULL					
			TOLERANCES UNLESS OTHERWISE SPECIFIED ANGLES = 0° 30' .XXX ± .01 (2.54)		PART NO.	SHEET	DWG NO.	REV
			162286 1 OF 1 C/162286					