

# Tool Pouches, Carriers, Belts & Suspenders

Just as Klein offers a variety of tools designed for specific needs, Klein offers a variety of tool pouches, carriers, belts, and suspenders that suit virtually every preference and need.

F O R P R O F E S S I O N A L S . . . S I N C E 1 8 5 7 ®



Tool Pouches, Carriers,  
Belts & Suspenders



## Tool Pouches

### 7-Pocket Tool Pouch

- Soft, pliable, white **leather**.
- Moisture-resistant to retain flexibility even after being wet and dried.
- Riveted to assure long life.

| Cat. No. | Pockets (Total Number) | Specialty Add-Ons | Belt Connection | Belt Width     | Overall Size                  | Weight (lbs.) |
|----------|------------------------|-------------------|-----------------|----------------|-------------------------------|---------------|
| 5166     | 7                      | chain tape thong  | tunnel loop     | 2-1/4" (57 mm) | 7" x 9-1/2" (178 mm x 241 mm) | .92           |



5166

### 8-Pocket Tool Pouch

- Soft, pliable, white **leather**.
- Roomy pouch for electricians, service men, and maintenance workers.
- Riveted and stitched for extra durability.
- Heavy-duty chain tape thong securely fastened with a rivet.

| Cat. No. | Pockets (Total Number) | Specialty Add-Ons                                       | Belt Connection | Belt Width     | Overall Size                | Weight (lbs.) |
|----------|------------------------|---|-----------------|----------------|-----------------------------|---------------|
| 5178     | 8                      | knife snap, chain tape thong, metal tape measure holder | tunnel loop     | 2-1/2" (64 mm) | 11" x 10" (279 mm x 254 mm) | 1.03          |



5178

### Single-Pocket Tool Pouch

- **Leather** construction.
- Perfect for carrying pliers and other tools in the hip pocket.
- Prevents wear and tearing of clothes, discomfort, and possible injury.
- Riveted to assure long life.

| Cat. No. | Pockets (Total Number) | Overall Size                  | Weight (lbs.) |
|----------|------------------------|-------------------------------|---------------|
| 5111     | 1                      | 4-1/2" x 7" (114 mm x 178 mm) | .23           |



5111

### Strap-Leather Bag

- **Leather** construction.
- Soft, pliable **leather** gussets allow expansion to 3-1/4" (83 mm).

| Cat. No. | Belt Connection | Belt Capacity         | Length      | Width       | Depth          | Weight (lbs.) |
|----------|-----------------|-----------------------|-------------|-------------|----------------|---------------|
| 5140K    | latigo thongs   | up to 3" (76 mm) wide | 7" (178 mm) | 9" (229 mm) | 3-1/4" (83 mm) | .65           |



5140K

All dimensions are in inches and (millimeters).



## Single-Pocket Small-Tool Pouch

- **Leather** construction.
- A convenient means of keeping track of small, easily lost tools.
- Can be hooked on belt or slipped in almost any pocket.
- Riveted and stitched for extra durability.

| Cat. No. | Pockets (Total Number) | Belt Connection              | Belt Width | Overall Size                  | Weight (lbs.) |
|----------|------------------------|------------------------------|------------|-------------------------------|---------------|
| 5175     | 1                      | flap snaps back to form loop | 3" (76 mm) | 4-3/4" x 7" (121 mm x 178 mm) | .30           |



5175

## 3-Pocket Utility Pouch

- **Leather** construction.
- Features 1" (25 mm) reinforced gusset.
- Has 2" (51 mm) outside pockets.
- Riveted and stitched for extra durability.

| Cat. No. | Pockets (Total Number) | Belt Connection | Belt Width | Overall Size                  | Weight (lbs.) |
|----------|------------------------|-----------------|------------|-------------------------------|---------------|
| 5145     | 3                      | tunnel          | 1" (25 mm) | 5-1/4" x 7" (133 mm x 178 mm) | .46           |



5145

## 4-Pocket Tool Pouch

- **Leather** construction.
- Riveted and stitched for extra durability.

| Cat. No. | Pockets (Total Number) | Specialty Add-Ons | Belt Connection | Belt Width | Overall Size                      | Weight (lbs.) |
|----------|------------------------|-------------------|-----------------|------------|-----------------------------------|---------------|
| 5119     | 4                      | knife snap        | slotted         | 2" (51 mm) | 6-1/2" x 8-1/2" (165 mm x 216 mm) | .39           |



5119

## 5-Pocket Tool Pouches

- Cat. No. 5125 is constructed of # 4 canvas, **leather** back, pockets and loops.
- Cat. No. 5125L is constructed of **leather**.
- General-purpose pouches.
- Slotted-**leather** tape thong (allows easy removal of 1" I.D. tape rolls).
- Riveted and stitched for extra durability.



5125



5125L

| Cat.No. | Pockets (Total Number) | Specialty Add-Ons  | Belt Connection | Belt Width     | Overall Size                      | Weight (lbs.) |
|---------|------------------------|--------------------|-----------------|----------------|-----------------------------------|---------------|
| 5125    | 5                      | leather tape thong | loops           | 2-1/4" (57 mm) | 7-1/2" x 8-1/2" (191 mm x 216 mm) | .63           |
| 5125L   | 5                      | leather tape thong | loops           | 2-1/4" (57 mm) | 7-1/2" x 8-1/2" (191 mm x 216 mm) | .75           |



# Tool Pouches

## 5-Pocket Tool Pouch

- **Leather** construction.
- *Riveted to assure long life.*

| Cat. No. | Pockets (Total Number) | Specialty Add-Ons | Belt Connection | Belt Width | Overall Size                     | Weight (lbs.) |
|----------|------------------------|-------------------|-----------------|------------|----------------------------------|---------------|
| 5126     | 5                      | knife snap        | slotted         | 2" (51 mm) | 6" x 8-3/4"<br>(152 mm x 222 mm) | .74           |



5126

## 5-Pocket Tool Pouch

- **Leather** construction.
- *Curved to fit the hip for added comfort.*
- *Riveted to assure long life.*

| Cat. No. | Pockets (Total Number) | Specialty Add-Ons | Belt Connection | Belt Width     | Overall Size                         | Weight (lbs.) |
|----------|------------------------|-------------------|-----------------|----------------|--------------------------------------|---------------|
| 5150     | 5                      | knife snap        | slotted         | 2-1/4" (57 mm) | 8-1/2" x 9-1/4"<br>(216 mm x 235 mm) | .60           |



5150

## 6-Pocket Tool Pouches

- **Leather** construction.
- *Riveted to assure long life.*



5127



5127T

| Cat. No. | Pockets (Total Number) | Specialty Add-Ons | Belt Connection | Belt Width     | Overall Size               | Weight (lbs.) |
|----------|------------------------|-------------------|-----------------|----------------|----------------------------|---------------|
| 5127     | 6                      | knife snap        | slotted         | 2" (51 mm)     | 7" x 10" (178 mm x 254 mm) | .79           |
| 5127T    | 6                      | knife snap        | tunnel loop     | 2-1/2" (64 mm) | 7" x 10" (178 mm x 254 mm) | .87           |

## 6-Pocket Tool Pouches

- **Leather** construction.
- *Extra-spacious tool carrier.*
- *Contoured to fit the hip for added comfort.*
- *Riveted to assure long life.*
- *Heavy-duty chain tape thong securely fastened with a rivet.*



5168



5168T

| Cat. No. | Pockets (Total Number) | Specialty Add-Ons            | Belt Connection | Belt Width     | Overall Size               | Weight (lbs.) |
|----------|------------------------|------------------------------|-----------------|----------------|----------------------------|---------------|
| 5168     | 6                      | knife snap, metal tape thong | slotted         | 2" (51 mm)     | 9" x 11" (229 mm x 279 mm) | 1.00          |
| 5168T    | 6                      | knife snap, metal tape thong | tunnel          | 2-1/2" (64 mm) | 9" x 11" (229 mm x 279 mm) | 1.10          |

All dimensions are in inches and (millimeters).



## 8-Pocket Extra-Capacity Tool Pouch

- **Leather** construction.
- Extra-capacity multi-purpose pouch.
- Stitched and riveted.

| Cat. No. | Pockets (Total Number) | Specialty Add-Ons              | Belt Connection | Belt Width | Overall Size                       | Weight (lbs.) |
|----------|------------------------|--------------------------------|-----------------|------------|------------------------------------|---------------|
| 5162T    | 8                      | knife snap, leather tape thong | tunnel loop     | 3" (76 mm) | 8-1/2" x 10-3/4" (216 mm x 273 mm) | 1.71          |



5162T

## 8-Pocket Tool Pouches

- **Leather** construction.
- Provides space for a large number of tools.
- Riveted to assure long life.



5164



5164T

| Cat. No. | Pockets (Total Number) | Specialty Add-Ons | Belt Connection | Belt Width     | Overall Size                      | Weight (lbs.) |
|----------|------------------------|-------------------|-----------------|----------------|-----------------------------------|---------------|
| 5164     | 8                      | knife snap        | slotted         | 2" (51 mm)     | 6-3/4" x 9-3/4" (171 mm x 248 mm) | 1.16          |
| 5164T    | 8                      | knife snap        | tunnel loop     | 2-1/2" (64 mm) | 6-3/4" x 9-3/4" (171 mm x 248 mm) | 1.21          |

## 10-Pocket Tool Pouch

- **Leather** construction.
- Riveted and stitched.

| Cat. No. | Pockets (Total Number) | Specialty Add-Ons | Belt Connection | Belt Width | Overall Size                | Weight (lbs.) |
|----------|------------------------|-------------------|-----------------|------------|-----------------------------|---------------|
| 5165     | 10                     | knife snap        | slotted         | 2" (51 mm) | 10" x 10" (254 mm x 254 mm) | 1.26          |

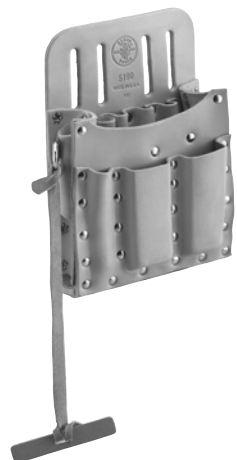


5165

## 10-Pocket Tool Pouch

- **Leather** construction.
- Versatile pouch favored by many telephone installers.
- Riveted throughout to assure long life.
- Ten separate compartments with places for a wide variety of pliers, screwdrivers, and other tools.
- Slotted-**leather** tape thong (allows easy removal of 1" I.D. tape rolls).

| Cat. No. | Pockets (Total Number) | Specialty Add-Ons  | Belt Connection | Belt Width     | Overall Size                  | Weight (lbs.) |
|----------|------------------------|--------------------|-----------------|----------------|-------------------------------|---------------|
| 5190     | 10                     | leather tape thong | slotted         | 1-3/4" (44 mm) | 6" x 8-3/4" (152 mm x 222 mm) | .75           |



5190



# Tool Pouches

## 11-Pocket Tool Pouch

- **Leather** construction.
- Multi-pocketed pouch made for electricians and other professionals.
- Soft, pliable, and moisture-resistant to retain flexibility even after being wet and dried.
- Riveted and stitched.
- Stainless steel power-return tape holder clip (accommodates from 8' to 30' tapes).
- Heavy-duty chain tape thong securely fastened with a rivet.

| Cat. No. | Pockets (Total Number) | Specialty Add-Ons                                       | Belt Connection | Belt Width     | Overall Size                    | Weight (lbs.) |
|----------|------------------------|---|-----------------|----------------|---------------------------------|---------------|
| 5167     | 11                     | knife snap, chain tape thong, metal tape measure holder | slotted         | 2-3/4" (70 mm) | 10" x 10-1/2" (254 mm x 267 mm) | 1.43          |



5167

## All-Purpose Bag

- Durable, **leather** bag is ideal for carrying loose tools and small parts.
- Adjustable belt strap for attaching to belts.

| Cat. No. | Belt Connection | Belt Capacity         | Length      | Width       | Depth      | Weight (lbs.) |
|----------|-----------------|-----------------------|-------------|-------------|------------|---------------|
| 5146     | belt strap      | up to 3" (76 mm) wide | 9" (229 mm) | 8" (203 mm) | 3" (76 mm) | .60           |



5146

## Extra-Large Canvas Utility Bag

- Heavy No. 8 natural canvas.
- Includes interior pocket.
- Inside bottom is reinforced with tough, tanned **leather**.
- Ventilating eyelet in bottom.
- Formed-top opening for easy access.
- Metal snaps provided on loops for easy attachment to belts up to 3" (76 mm) wide.

| Cat. No. | Belt Connection | Belt Capacity         | Length       | Width        | Depth       | Weight (lbs.) |
|----------|-----------------|-----------------------|--------------|--------------|-------------|---------------|
| 5141P    | loops           | up to 3" (76 mm) wide | 10" (254 mm) | 12" (305 mm) | 5" (127 mm) | .88           |



5141P

## Canvas Utility Bags

- Heavy No. 8 natural canvas.
- Top edge reinforced with 1/4" (6 mm) rope.
- Metal snaps provided on loops for easy attachment to belts up to 3" (76 mm) wide.
- Ventilating eyelet in bottom.
- Cat. No. 5142P version includes interior pocket.

| Cat. No. | Belt Connection | Belt Capacity         | Length      | Width        | Top Diameter             | Weight (lbs.) |
|----------|-----------------|-----------------------|-------------|--------------|--------------------------|---------------|
| 5142     | loops           | up to 3" (76 mm) wide | 9" (229 mm) | 10" (254 mm) | 8" x 3" (203 mm x 76 mm) | .60           |
| 5142P    | loops           | up to 3" (76 mm) wide | 9" (229 mm) | 10" (254 mm) | 8" x 3" (203 mm x 76 mm) | .65           |



5142

All dimensions are in inches and (millimeters).



## Water-Repellent Canvas Pouches

- One-piece tan 12-oz. water-repellent mildew resistant canvas.
- Top edge reinforced with 1/4" (6 mm) rope.

| Cat. No. | Belt Connection | Belt Capacity              | Length          | Width          | Top Diameter | Weight (lbs.) |
|----------|-----------------|----------------------------|-----------------|----------------|--------------|---------------|
| 5179     | loops           | up to 4-1/2" (114 mm) wide | 7-1/2" (191 mm) | 3-1/2" (89 mm) | 7" (178 mm)  | .30           |
| 5179S    | snap            | up to 4-1/2" (114 mm) wide | 7-1/2" (191 mm) | 3-1/2" (89 mm) | 7" (178 mm)  | .30           |



5179

## Bull-Pin and Bolt Bags

- No. 4 canvas or **leather** with double bottom.
- Bolt bag with bull-pin loop on each side.



5416L



5416

| Cat. No.       | Belt Connection | Belt Capacity         | Length      | Width       | Depth        | Weight (lbs.) |
|----------------|-----------------|-----------------------|-------------|-------------|--------------|---------------|
| <b>Canvas</b>  |                 |                       |             |             |              |               |
| 5416           | loops           | up to 3" (76 mm) wide | 5" (127 mm) | 9" (229 mm) | 10" (254 mm) | .85           |
| 5416T          | tunnel          | up to 3" (76 mm) wide | 5" (127 mm) | 9" (229 mm) | 10" (254 mm) | .90           |
| <b>Leather</b> |                 |                       |             |             |              |               |
| 5416L          | loops           | up to 3" (76 mm) wide | 5" (127 mm) | 9" (229 mm) | 10" (254 mm) | 1.10          |

## Leather Bolt Bag

- **Leather** construction.
- Bolt bag with bull-pin loop on each side.

| Cat. No. | Belt Connection | Belt Capacity         | Length      | Width           | Depth           | Weight (lbs.) |
|----------|-----------------|-----------------------|-------------|-----------------|-----------------|---------------|
| 42247    | tunnel          | up to 3" (76 mm) wide | 5" (127 mm) | 8-1/2" (216 mm) | 8-1/2" (216 mm) | .75           |



42247



# Tool Combination Aprons

## One-Piece Nail/Screw and Tool-Pouch Apron



- **Leather** construction.
- Versatile, roomy double-pouch apron for construction workers, carpenters, and other professionals.
- Double-pouch design allows unrestricted leg movement.
- Apron is reinforced throughout with rust-proof rivets.
- Heavy-duty 2-1/4" (57 mm) wide web belt has army-style buckle, snap, and slides.
- The large pockets and nailbolt pockets have rolled-over, doubled edges for long wear.
- Four slots for punches or nail sets.
- Two heavy hammer loops.
- Riveted and stitched for extra durability.

42242

| Cat. No. | Pockets (Total Number) | Size Adjustable              | Weight (lbs.) |
|----------|------------------------|------------------------------|---------------|
| 42242    | 10                     | 32" - 48" (813 mm - 1219 mm) | 1.81          |

## Nail/Screw and Tool-Pouch Combinations

- **Leather** construction.
- Large pockets have rolled-over doubled edges for extra-long life.
- All pouches slide along belt for convenient working position.
- Left- and right-hand nail-and-tool pouches.
- Fully adjustable poly-web belt (32" - 48").
- Tape-rule holder for 20' and 25' tape measures with belt clips.
- Heavy hammer loops.



42244

| Cat. No. | Description  | Weight (lbs.) |
|----------|--|---------------|
| 42244    | complete combination: belt (Cat. No. 5225 mm), left-hand (Cat. No. 42246 mm) and right-hand (Cat. No. 42245 mm) nail-and-tool pouches, and tape-rule holder (Cat. No. 5195 mm) | 2.02          |
| 42245    | right-hand nail-and-tool pouch only. Tunnel loop fits any belt up to 3" (76 mm) width.   | .70           |
| 42246    | left-hand nail-and-tool pouch only. Tunnel loop fits any belt up to 3" (76 mm) width.  | .72           |
| 5225     | poly-web belt only. Adjustable from 32" (813 mm) to 48" (1219 mm). Tunnel loop fits any belt up to 3" (76 mm) width.   | .42           |
| 5195     | tape rule holder only for 20' and 25' tapes.   | .18           |

## 6-Pocket Nail/Screw and Tool Pouch

- **Leather** construction.
- Heavy hammer-loops on both sides, allowing for convenient use by right- or left-handed workers.
- Riveted and stitched for extra durability.



42241

| Cat. No. | Pockets (Total Number) | Specialty Add-Ons | Belt Connection | Belt Width | Overall Size                    | Weight (lbs.) |
|----------|------------------------|-------------------|-----------------|------------|---------------------------------|---------------|
| 42241    | 6                      | two hammer loops  | tunnel          | 3" (76 mm) | 11" x 11-3/4" (279 mm x 298 mm) | .86           |

All dimensions are in inches and (millimeters).

**⚠ WARNING:** The tool belts shown on this page are not occupational protective belts.





## Scissors Holder – Tunnel Loop

- **Leather** construction.
- Designed for Klein electrician's scissors, Cat. Nos. 2100-5 and 2100-7.
- Riveted and stitched for extra durability.

| Cat. No. | Belt Connection | Belt Width           | Overall Size                     | Weight (lbs.) |
|----------|-----------------|----------------------|----------------------------------|---------------|
| 5100     | tunnel          | up to 1-3/4" (44 mm) | 3-3/8" x 7-1/4" (86 mm x 184 mm) | .10           |



5100

## Scissors Holder – Slotted

- **Leather** construction.
- Riveted with clip on back for attaching to belt.
- Designed to hold Klein electrician's scissors, Cat. Nos. 2100-5 and 2100-7.
- Riveted to assure long life.

| Cat. No. | Belt Connection        | Belt Width           | Overall Size             | Weight (lbs.) |
|----------|------------------------|----------------------|--------------------------|---------------|
| 5101     | slotted and metal clip | up to 1-1/2" (38 mm) | 2" x 7" (51 mm x 178 mm) | .11           |



5101

## Scissors and Cable-Splicer's Knife Holders

- **Leather** construction.
- Specially designed to hold a pair of Klein electrician's scissors (Cat. Nos. 2100-5 or 2100-7), and Cat. No. 44200 cable-splicer's knife.
- Riveted and stitched for extra durability.

| Cat. No. | Belt Connection | Belt Width           | Overall Size                 | Weight (lbs.) |
|----------|-----------------|----------------------|------------------------------|---------------|
| 5187     | slotted         | up to 2-1/4" (57 mm) | 2" x 7-1/4" (51 mm x 184 mm) | .11           |
| 5187T    | tunnel          | up to 2-1/4" (57 mm) | 2" x 7-1/4" (51 mm x 184 mm) | .13           |



5187

5187T

## Lineman's Knife Holder

- **Leather** construction.
- Designed for Klein skinning knives Cat. Nos. 1570-3, 1570-3LR, and 1560-3.
- Riveted to assure long life.

| Cat. No. | Belt Connection | Belt Width       | Overall Size                     | Weight (lbs.) |
|----------|-----------------|------------------|----------------------------------|---------------|
| 5163     | slotted         | up to 2" (51 mm) | 3-1/2" x 9-3/8" (89 mm x 238 mm) | .21           |



5163

## Knife Holder

- **Leather** construction.
- Designed for utility knives and Klein Cat. Nos. 44100 and 44105.
- Corners riveted and stitched for extra durability.

| Cat. No. | Belt Connection | Belt Width           | Overall Size                     | Weight (lbs.) |
|----------|-----------------|----------------------|----------------------------------|---------------|
| 5185     | slotted         | up to 2-1/2" (64 mm) | 2-5/8" x 8-1/4" (67 mm x 210 mm) | .11           |



5185



## Tool Holders

### Pocket-Knife Holder

- **Leather** construction.
- Designed for sportsman knives and Klein Cat. No. 44137.
- Snap closure.
- Corners riveted and stitched for extra durability.

| Cat. No. | Belt Connection | Belt Width           | Overall Size                  | Weight (lbs.) |
|----------|-----------------|----------------------|-------------------------------|---------------|
| 5186     | loop on back    | up to 2-1/2" (64 mm) | 2-1/4" x 5-3/4" (57 x 146 mm) | .18           |



5186

### Cable-Splicer's Knife Holders

- **Leather** construction.
- Designed to hold Cat. No. 44200 cable-splicer's knife.
- Riveted and stitched for extra durability.

| Cat. No. | Belt Connection | Belt Width           | Overall Size                     | Weight (lbs.) |
|----------|-----------------|----------------------|----------------------------------|---------------|
| 5188     | slotted         | up to 2-1/4" (57 mm) | 2-1/8" x 7-3/4" (54 mm x 197 mm) | .08           |
| 5188T    | tunnel          | up to 2-1/4" (57 mm) | 2-1/8" x 7-1/4" (54 mm x 184 mm) | .11           |



5188

5188T

### Pliers Holders – Open Bottom

- **Leather** construction.
- Long-nose pliers may protrude through opening at bottom.
- Riveted to assure long life.
- Cat. No. 5107-6 holds 6" (152 mm) or 7" (178 mm) long-nose or diagonal-cutting pliers.
- Cat. No. 5107-9 holds 8" (203 mm) or 9" (229 mm) long-nose or diagonal-cutting pliers.

| Cat. No. | Belt Connection | Belt Width                   | Overall Size                     | Weight (lbs.) |
|----------|-----------------|------------------------------|----------------------------------|---------------|
| 5107-6   | slotted         | up to belts up to 2" (51 mm) | 3-1/2" x 8-1/2" (89 mm x 216 mm) | .17           |
| 5107-9   | slotted         | up to belts up to 2" (51 mm) | 3-3/4" x 11" (95 mm x 279 mm)    | .26           |



5107-6

### Pliers Holder – Closed Bottom

- **Leather** construction.
- Nose of pliers does not protrude from closed bottom.
- Bottom is vented to prevent collection of dirt or water.
- Riveted to assure long life.
- Holds 7", 8", or 9" side-cutting pliers.

| Cat. No. | Belt Connection | Belt Width                                      | Overall Size                  | Weight (lbs.) |
|----------|-----------------|---|-------------------------------|---------------|
| 5112     | slotted         | up to 2" (51 mm) wide or may be riveted to belt | 3-1/4" x 11" (83 mm x 279 mm) | .21           |



5112

### Pliers, Folding Rule, Screwdriver, and Wrench Holder

- **Leather** construction.
- No exposed rivets in back.
- Riveted to assure long life.
- Pockets for 7", 8", and 9" side-cutting pliers, most screwdrivers, 6' folding rules, and open end wrenches from 9/16" to 13/16".
- Nickel plated alloy snap.

| Cat. No. | Pockets (Total Number) | Belt Connection | Belt Width       | Overall Size                   | Weight (lbs.) |
|----------|------------------------|-----------------|------------------|--------------------------------|---------------|
| 5118C    | 4                      | slotted         | up to 2" (51 mm) | 6-1/2" x 11" (165 mm x 279 mm) | .78           |



5118C

All dimensions are in inches and (millimeters).



## Pliers, Rule, and Screwdriver Holders

- **Leather construction.**
- 3 pockets for pliers, folding rule, and screwdriver.
- S5118PRS has a two-way knife snap.
- Riveted to assure long life.
- Pockets for 7", 8", and 9" side-cutting pliers, most screwdrivers, 6' folding rules, and open end wrenches from 9/16" to 13/16".

| Cat. No. | Belt Connection | Belt Width       | Overall Size                   | Weight (lbs.) |
|----------|-----------------|------------------|--------------------------------|---------------|
| 5118PRS  | slotted         | up to 2" (51 mm) | 6-3/4" x 10" (171 mm x 254 mm) | .49           |
| S5118PRS | slotted         | up to 2" (51 mm) | 6-3/4" x 10" (171 mm x 254 mm) | .56           |



5118PRS

## Pliers and Folding Rule Holders

- **Leather construction.**
- Riveted to assure long life.
- Pockets for 7", 8", or 9" side-cutting pliers and 6-ft. folding rule.

| Cat. No. | Pockets (Total Number) | Belt Connection | Belt Width           | Overall Size                       | Weight (lbs.) |
|----------|------------------------|-----------------|----------------------|------------------------------------|---------------|
| 5118R    | 2                      | slotted         | up to 2" (51 mm)     | 4-3/4" x 8" (121 mm x 203 mm)      | .43           |
| 5118RT   | 2                      | tunnel          | up to 3-3/4" (95 mm) | 4-1/2" x 12-1/2" (114 mm x 318 mm) | .50           |



5118R

5118RT

## Pliers and Screwdriver Holder

- **Leather construction.**
- Riveted to assure long life.
- Pockets for 7", 8", or 9" side-cutting pliers and most screwdriver sizes.

| Cat. No. | Pockets (Total Number) | Belt Connection | Belt Width       | Overall Size                       | Weight (lbs.) |
|----------|------------------------|-----------------|------------------|------------------------------------|---------------|
| 5118S    | 2                      | slotted         | up to 2" (51 mm) | 4-1/4" x 10-3/4" (108 mm x 273 mm) | .35           |



5118S

## Hammer Holders

- **Leather construction.**
- Heavy-metal hammer loop riveted to panel.
- Riveted and stitched for extra durability.
- Holds all hammers except lineman's.

| Cat. No. | Belt Connection | Belt Width           | Overall Size                       | Weight (lbs.) |
|----------|-----------------|----------------------|------------------------------------|---------------|
| 5456     | slotted         | up to 2-1/2" (64 mm) | 4-5/16" x 7-7/8" (110 mm x 200 mm) | .33           |
| 5456T    | tunnel          | up to 4" (102 mm)    | 4-5/16" x 10" (110 mm x 254 mm)    | .42           |
| 5456TS   | tunnel          | up to 4" (102 mm)    | 4-5/16" x 10" (110 mm x 254 mm)    | .42           |



5456

5456T

5456TS

## Flashlight Holder

- **Leather construction.**
- Designed for a standard two-cell flashlight.
- Riveted to assure long life.

| Cat. No. | Belt Connection | Belt Width           | Overall Size                 | Weight (lbs.) |
|----------|-----------------|----------------------|------------------------------|---------------|
| 5129     | slotted         | up to 2-1/4" (44 mm) | 3" x 9-1/2" (76 mm x 241 mm) | .22           |



5129



## Tool Holders

### Voltage-Tester Holder

- **Leather** construction.
- Holds Voltage Tester Cat. No. 69115 and most standard voltage testers.
- Full top flap with twist-closure keeps tester in holder; keeps out weather and dirt.
- Riveted and stitched for extra durability.

| Cat. No. | Belt Connection | Belt Width           | Overall Size                     | Weight (lbs.) |
|----------|-----------------|----------------------|----------------------------------|---------------|
| 5137     | slotted         | up to 2 1/4" (57 mm) | 3-1/2" x 9-1/2" (89 mm x 241 mm) | .47           |



5137

### Voltage-Tester Holder

- **Leather** construction.
- Designed to hold most standard voltage testers.
- Equipped with a snap to prevent the instrument from falling out of holder.
- Riveted to assure long life.

| Cat. No. | Belt Connection | Belt Width           | Overall Size                 | Weight (lbs.) |
|----------|-----------------|----------------------|------------------------------|---------------|
| 5138     | slotted         | up to 2-1/4" (57 mm) | 3" x 9-1/2" (76 mm x 241 mm) | .25           |



5138

### Tape-Rule Holders

- **Leather** construction.
- Cut-out sides for easy access to tape.
- Slotted for attaching to belts up to 2-1/2" (63 mm) wide.
- Riveted to assure long life.

#### Klein Tape-Rule Sizing Guide

| Small  | Medium    | Large       |
|--------|-----------|-------------|
| 922-12 | 922-16    | 922-25      |
| 908-12 | 928-16 HV | 928-25 HV   |
|        | 926-5 WE  | 922-30      |
|        | 908-16    | 908-25      |
|        | 908-16 RE | 908-30      |
|        |           | 917-25 RE   |
|        |           | 916-25 RE   |
|        |           | 916-75 MERE |
|        |           | 916-30 RE   |



5195

| Cat. No. | Description                           | Overall Size                  | Weight (lbs.) |
|----------|---------------------------------------|-------------------------------|---------------|
| 5194     | holds small-sized power return rules  | 4" x 6" (102 mm x 152 mm)     | .16           |
| 5195     | holds medium-sized power return rules | 4-1/2" x 7" (114 mm x 178 mm) | .18           |
| 5196     | holds medium-sized power return rules | 5" x 7" (127 mm x 178 mm)     | .21           |

### Tape-Rule Holder

- **Leather** construction.
- Designed for tape rules equipped with belt clips.
- No need to remove belt or harness; just loop holder over a belt or harness up to 3" wide and snap it closed.
- Stainless steel clip holder accepts most tape clips up to 1-1/4" wide.

| Cat. No. | Belt Connection   | Belt Width        | Overall Size                 | Weight (lbs.) |
|----------|-------------------|-------------------|------------------------------|---------------|
| 5197     | tunnel with snaps | up to 4" (102 mm) | 2-3/4" x 6" (70 mm x 152 mm) | .19           |



5197

All dimensions are in inches and (millimeters).



## Bull-Pin Holders

- **Leather** construction.
- Holders for Klein bull pins.
- Riveted to assure long life.
- Holds all standard bull pins.

| Cat. No. | Belt Connection | Belt Width           | Overall Size                      | Weight (lbs.) |
|----------|-----------------|----------------------|-----------------------------------|---------------|
| 5417     | slotted         | up to 2" (51 mm)     | 3-1/4" x 11" (83 mm x 279 mm)     | .22           |
| 5417T    | tunnel          | up to 3-1/2" (89 mm) | 3-1/4" x 12-1/4" (83 mm x 311 mm) | .32           |



## Erection Wrench Holders

- **Leather** construction.
- Have tool-slots for two erection wrenches.
- Tunnel loop on Cat. No. 5459T is riveted to assure long life.
- Holds erection wrenches and adjustable head construction wrench Cat. No. 3239.

| Cat. No. | Belt Connection | Belt Width  | Overall Size                  | Weight (lbs.) |
|----------|-----------------|---|-------------------------------|---------------|
| 5459T    | tunnel          | up to 3-1/2" (89 mm) or to slide over D-rings, buckles, and other accessories | 6" x 9-1/2" (152 mm x 241 mm) | .32           |
| 5460     | slotted         | up to 2" (51 mm)  | 6" x 8-1/2" (152 mm x 216 mm) | .19           |



## Erection Wrench Holder

- Cotton web tunnel loop and **leather** construction.
- Holds two erection wrenches.
- Riveted to assure long life.
- Holds erection wrenches and adjustable head construction wrench Cat. No. 3239.

| Cat. No. | Belt Connection   | Belt Width       | Overall Size               | Weight (lbs.) |
|----------|-------------------|------------------|----------------------------|---------------|
| 5461T    | cotton web tunnel | up to 2" (51 mm) | 6" x 10" (152 mm x 254 mm) | .26           |



## Tie-Wire Reel Pad

- Worn on the belt under the Klein tie-wire reel.
- Made of 3/16" (5 mm) thick rigging **leather**.
- Slots accommodate belts up to 2" (51 mm) wide.
- Underside has a sponge-rubber pad to minimize hip fatigue.
- Holds Cat. No. 27400 tie-wire reel.
- To be used with Cat. Nos. 5415 or 5420 belts.

| Cat. No. | Length      | Width       | Weight (lbs.) |
|----------|-------------|-------------|---------------|
| 27450    | 7" (178 mm) | 7" (178 mm) | .300          |

Tie-wire reel available on page 206. Ironworker's heavy-duty tie-wire belts available on page 163.



## Tape Thong

- **Leather** strap with fiber bar.
- Fits all standard electrical tape rolls.

| Cat. No. | Belt Connection | Length       | Weight (lbs.) |
|----------|-----------------|--------------|---------------|
| 5130     | slotted         | 12" (305 mm) | .03           |



All dimensions are in inches and (millimeters).



## Tool Holders

### Two-Way Knife Snap

- **Leather** construction.
- Screw-type rivets for easy attachment to belts.

| Cat. No. | Belt Connection | Length          | Weight (lbs.) |
|----------|-----------------|-----------------|---------------|
| 5131     | screw rivets    | 4-1/2" (114 mm) | .10           |



5131

### Snap Loop

- **Leather** construction.
- Designed for tools with hang holes.
- Loop with snap hook for carrying an adjustable wrench, welder's igniter or other tool with hang hole.
- Riveted to assure long life.

| Cat. No. | Belt Connection | Belt Width        | Overall Size                     | Weight (lbs.) |
|----------|-----------------|-------------------|----------------------------------|---------------|
| 5458     | slides on       | up to 4" (102 mm) | 1-1/2" x 8-1/2" (38 mm x 216 mm) | .15           |



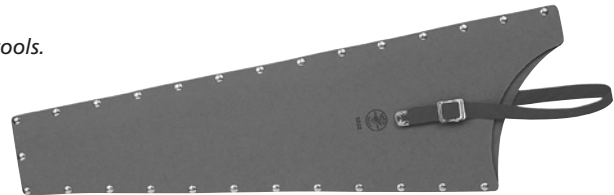
5458

## Tool Guards

### Tool Guards

- Protect both tool and user with a Klein guard for your edged tools.
- Made of 1/16" (1.6 mm) vulcanized hard fiber, securely riveted and equipped with adjustable web straps to hold the tool.

| Cat. No. | Description  | Weight (lbs.) |
|----------|--|---------------|
| 5502     | 26" (660 mm) hand-saw guard  | 1.07          |
| 5507     | pole pruning-saw guard   | .40           |
| 5508     | cable-saw guard  | .43           |
| 5522     | 26" (660 mm) curved pruning-saw guard. Will also accommodate shorter lengths | .86           |



5502

### Axe Guard

- Protect both tool and user with a Klein guard for your edged tools.
- Made of 1/16" (1.6 mm) vulcanized hard fiber, securely riveted and equipped with adjustable web straps to hold the tool.

| Cat. No. | Description | Weight (lbs.) |
|----------|-------------|---------------|
| 5509     | axe guard   | .22           |



5509

### Splitting-Knife Guards

- Made of **leather**.

| Cat. No. | Description  | Weight (lbs.) |
|----------|--|---------------|
| 5574L    | leather splitting or chipping-knife guard. Fits Klein knife, Cat. No. 1515-1 | .13           |
| 5574S    | leather splitting or chipping-knife guard. Fits Klein knife, Cat. No. 1515-S | .05           |



5574L



5574S

All dimensions are in inches and (millimeters).



## Features:

Constructed of double layered 1000 denier Dupont Cordura® Plus Nylon.

Double nylon-stitched and rivet reinforced for extra durability.

Lightweight and comfortable in warm climates, soft and pliable in cold climates.

Oversized pockets and reinforced bottom for extra carrying capacity, as well as durability.

## PowerLine™ Series

Exceptional resistance to abrasion, punctures, and tearing.

No break-in period; naturally forms and hugs the body, making it easy to wear for everyday use.

Heavy-duty, nylon webbing.

Washable.



Tool Pouches, Carriers, Belts & Suspenders

## Tool Pouches

### PowerLine™ Series



5700



5701



5702



5703

| Cat. No. | Pockets (Total Number) | Overall Size                | Weight (lbs.) |
|----------|------------------------|-----------------------------|---------------|
| 5700     | 9                      | 11" x 12" (279 mm x 305 mm) | .92           |
| 5701     | 8                      | 11" x 12" (279 mm x 305 mm) | .83           |
| 5702     | 2                      | 11" x 12" (279 mm x 305 mm) | .64           |
| 5703     | 3                      | 11" x 12" (279 mm x 305 mm) | .75           |
| 5718     | 8                      | 11" x 12" (279 mm x 305 mm) | .74           |
| 5719     | 19                     | 11" x 12" (279 mm x 305 mm) | .87           |



5718



5719

All dimensions are in inches and (millimeters).



# PowerLine™ Series

## Closeable Pouch **PowerLine™ Series**

Additional Feature:

- Closeable pouch helps protect supplies and tools.

| Cat. No. | Belt Connection | Belt Width           | Overall Size                      | Weight (lbs.) |
|----------|-----------------|----------------------|-----------------------------------|---------------|
| 5714     | tunnel          | up to 2-1/4" (57 mm) | 7-1/2" x 6-3/4" (190 mm x 171 mm) | .24           |



5714

## Hammer Holder **PowerLine™ Series**

Additional Feature:

- Heavy-metal hammer loop riveted for strength.

| Cat. No. | Belt Connection | Belt Width           | Overall Size                  | Weight (lbs.) |
|----------|-----------------|----------------------|-------------------------------|---------------|
| 5706     | tunnel          | up to 2-1/4" (57 mm) | 4-1/8" x 5" (105 mm x 127 mm) | .19           |



5706

## Tape Measure Holder **PowerLine™ Series**

Additional Features:

- Holds most tape measures with belt clips.
- Rust-resistant metal clip riveted for strength.

| Cat. No. | Belt Connection | Belt Width           | Overall Size                     | Weight (lbs.) |
|----------|-----------------|----------------------|----------------------------------|---------------|
| 5707     | tunnel          | up to 2-1/4" (57 mm) | 4-1/8" x 3-3/4" (104 mm x 95 mm) | .10           |



5707

## Multi-Purpose Holder **PowerLine™ Series**

Additional Feature:

- Holds a flashlight, cellular phone, or electrical tester.

| Cat. No. | Belt Connection | Belt Width           | Overall Size                     | Weight (lbs.) |
|----------|-----------------|----------------------|----------------------------------|---------------|
| 5708     | tunnel          | up to 2-1/4" (57 mm) | 3-1/4" x 8-1/2" (83 mm x 216 mm) | .13           |



5708

## Tape Measure Pouch **PowerLine™ Series**

Additional Features:

- Holds most 35-foot tape measures, fasteners, nails, or wire nuts.
- Two inside elastic loops fit screwdrivers, pencils, markers, etc.

| Cat. No. | Belt Connection | Belt Width           | Overall Size                   | Weight (lbs.) |
|----------|-----------------|----------------------|--------------------------------|---------------|
| 5712     | tunnel          | up to 2-1/4" (57 mm) | 8-1/4" x 4-1/2" (210 x 114 mm) | .24           |



5712

All dimensions are in inches and (millimeters).





## Flashlight Holder **PowerLine™ Series**

Additional Features:

- Accommodates most "D" cell size battery flashlights up to 1-7/8" in diameter.
- Heavy-duty, 1-1/2" wide nylon webbing for extra strength.

| Cat. No. | Belt Connection | Belt Width           | Overall Size                     | Weight (lbs.) |
|----------|-----------------|----------------------|----------------------------------|---------------|
| 5713     | tunnel          | up to 2-1/4" (57 mm) | 4-1/4" x 2-3/8" (108 mm x 60 mm) | .06           |



5713

## Mobile Phone Holders **PowerLine™ Series**

Additional Features:

- Fits most mobile phones.
- Metal belt clip for simple mounting and removal from belts up to 2" wide.
- Closable flap features genuine Velcro® brand touch fastener.
- Closed bottom for convenient storage.

| Cat. No. | Size   | Length          | Width          | Weight (lbs.) |
|----------|--------|-----------------|----------------|---------------|
| 5715S    | small  | 4-1/2" (114 mm) | 2-5/8" (67 mm) | .10           |
| 5715M    | medium | 5-1/2" (140 mm) | 2-5/8" (67 mm) | .11           |
| 5715     | large  | 6-1/2" (165 mm) | 3-5/8" (92 mm) | .14           |

Velcro® is a registered trademark of Velcro Industries B.V.



5715M

## Utility Knife Holder **PowerLine™ Series**

Additional Feature:

- Holds standard utility knife or other small tools.

| Cat. No. | Belt Connection | Belt Width           | Overall Size                     | Weight (lbs.) |
|----------|-----------------|----------------------|----------------------------------|---------------|
| 5716     | tunnel          | up to 2-1/4" (57 mm) | 7-3/4" x 2-1/2" (197 mm x 64 mm) | .15           |



5716

## Web Work Belt **PowerLine™ Series**

- Adjustable belt – fits waist sizes up to 54".
- Heavy-duty, 2" wide nylon webbing for extra strength.
- Accommodates tunnel loop and slotted tool pouches and holders.
- Rugged metal buckle for quick release and adjustment.

| Cat. No. | Size              | Width      | Weight (lbs.) |
|----------|-------------------|------------|---------------|
| 5705     | one size fits all | 2" (51 mm) | .56           |



5705

## Padded Tool Belts **PowerLine™ Series**

Additional Features:

- 5" cushioned pad for stability and comfort.
- Tapered front for comfort while bending.
- Heavy-duty 2" wide nylon web belt with rugged metal buckle.

|             | Cat. No. | Size                          | Width      | Weight (lbs.) |
|-------------|----------|-------------------------------|------------|---------------|
| <b>NEW!</b> | 5704S    | 28" – 32" (711 mm – 813 mm)   | 2" (51 mm) | .90           |
|             | 5704M    | 32" – 36" (813 mm – 914 mm)   | 2" (51 mm) | .95           |
|             | 5704L    | 36" – 40" (914 mm – 1016 mm)  | 2" (51 mm) | 1.00          |
|             | 5704XL   | 40" – 44" (1016 mm – 1118 mm) | 2" (51 mm) | 1.05          |
|             | 5704XXL  | 44" – 48" (1118 mm – 1219 mm) | 2" (51 mm) | 1.10          |



5704L

All dimensions are in inches and (millimeters).

**⚠ WARNING:** This is NOT an occupational protective belt.

**⚠ WARNING:** NOT for fall arrest or back support.



# PowerLine™ Series

## Padded Suspenders **PowerLine™ Series**

Additional Features:

- Fully adjustable length – front & back.
- Heavy-duty, 1-1/2" wide nylon web strap for extra strength and long wear.
- Convenient fastening system features genuine VELCRO® brand touch fasteners.
- Heavy-duty padding for user comfort.



5717

| Cat. No. | Size               | Weight (lbs.) |
|----------|--------------------|---------------|
| 5717     | one size fits most | .84           |

Velcro® is a registered trademark of Velcro Industries B.V.

## 4-Piece Combo Sets **PowerLine™ Series**

Set consists of the following pieces:

- 8-Pocket Tool Pouch (Cat. No. 5701).
- 3-Pocket Utility Pouch (Cat. No. 5703).
- Hammer Holder (Cat. No. 5706).
- Padded Tool Belt (Cat. No. 5704).



5709L

| Cat. No. | Size                          | Width of Belt | Weight (lbs.) |
|----------|-------------------------------|---------------|---------------|
| 5709M    | 32" – 36" (813 mm – 914 mm)   | 2" (51 mm)    | 2.71          |
| 5709L    | 36" – 40" (914 mm – 1016 mm)  | 2" (51 mm)    | 2.77          |
| 5709XL   | 40" – 44" (1016 mm – 1118 mm) | 2" (51 mm)    | 2.80          |
| 5709XXL  | 44" – 48" (1118 mm – 1219 mm) | 2" (51 mm)    | 2.60          |

## 4-Piece Electrician's Combo Sets **PowerLine™ Series**

Set consists of the following pieces:

- 8-Pocket Tool Pouch (Cat. No. 5718).
- 19-Pocket Tool Pouch (Cat. No. 5719).
- Hammer Holder (Cat. No. 5706).
- Padded Tool Belt (Cat. No. 5704).



5710M

| Cat. No. | Size                          | Width of Belt | Weight (lbs.) |
|----------|-------------------------------|---------------|---------------|
| 5710M    | 32" – 36" (813 mm – 914 mm)   | 2" (51 mm)    | 2.75          |
| 5710L    | 36" – 40" (914 mm – 1016 mm)  | 2" (51 mm)    | 2.80          |
| 5710XL   | 40" – 44" (1016 mm – 1118 mm) | 2" (51 mm)    | 3.05          |
| 5710XXL  | 44" – 48" (1118 mm – 1219 mm) | 2" (51 mm)    | 2.60          |

All dimensions are in inches and (millimeters).

**▲WARNING:** This is NOT an occupational protective belt.

**▲WARNING:** NOT for fall arrest or back support.



## Lightweight Tool Belt

- **Leather** construction.
- Designed to carry **lightweight** tool pouches.

| Cat. No. | Size                         | Width      | Weight (lbs.) |
|----------|------------------------------|------------|---------------|
| 5201     | 33" – 45" (838 mm – 1143 mm) | 1" (25 mm) | .30           |



5201

## General-Purpose Belts

- **Strong, heavy-duty leather.**
- Removable **single-tongue buckle** held by two heavy-duty snaps.

| Cat. No. | Size                          | Width          | Weight (lbs.) |
|----------|-------------------------------|----------------|---------------|
| 5202M    | 32" – 40" (813 mm – 1016 mm)  | 1-1/2" (38 mm) | .40           |
| 5202L    | 38" – 46" (965 mm – 1168 mm)  | 1-1/2" (38 mm) | .45           |
| 5202XL   | 46" – 54" (1168 mm – 1372 mm) | 1-1/2" (38 mm) | .50           |



5202L

## Lightweight Utility Belt

- **Strong, lightweight, synthetic-web.**
- Quickly adjusts for waist sizes through 52" (1321 mm).
- Accepts tunnel-loop and slotted pouches and holders.
- **Tough, molded, non-metallic, slide-action buckle** provides single-handed, quick release and adjustment.

| Cat. No. | Color | Size              | Width      | Weight (lbs.) |
|----------|-------|-------------------|------------|---------------|
| 5204     | blue  | one size fits all | 2" (51 mm) | .20           |



5204

## Adjustable Web Tool Belt

- Fits waist sizes up to 48".
- Accommodates tunnel loop and slotted tool pouches and holders.
- 2" wide polypropylene webbing.
- Rugged metal buckle for quick release and easy adjustment.
- Corrosion resistant hardware.

| Cat. No. | Size          | Width      | Weight (lbs.) |
|----------|---------------|------------|---------------|
| 5225     | 48" (1219 mm) | 2" (51 mm) | .60           |



5225

## Heavy-Duty Embossed Tool Belts

- **Strong, heavy-duty leather.**
- Equipped with a **double-tongue buckle**

| Cat. No. | Size                          | Width      | Weight (lbs.) |
|----------|-------------------------------|------------|---------------|
| 5415S    | 32" – 40" (813 mm – 1016 mm)  | 2" (51 mm) | .63           |
| 5415     | 36" – 44" (914 mm – 1118 mm)  | 2" (51 mm) | .64           |
| 5415L    | 40" – 48" (1016 mm – 1219 mm) | 2" (51 mm) | .64           |
| 5415XL   | 44" – 52" (1118 mm – 1321 mm) | 2" (51 mm) | .65           |



5415

All dimensions are in inches and (millimeters).

**▲WARNING:** This is NOT an occupational protective belt.

**▲WARNING:** NOT for fall arrest or back support.



## Tool Belts

### Cotton/Polyester Blend Tool Belt w/Quick-Release Buckle

- NOT an occupational protective belt. ONLY use as a tool belt.
- Features a forged, quick-release buckle for emergency situations where the user has to quickly disengage the belt (for example, when working over water or in grain elevators).
- Must be worn over the user's harness and clothing so it will drop free when released.
- Belt is made of a mildew-resistant blend of cotton/polyester webbing for comfort and strength.

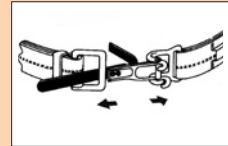
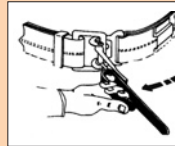
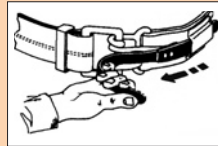


5425M

| Cat. No. | Size                         | Weight (lbs.) |
|----------|------------------------------|---------------|
| 5425M    | 30" - 44" (762 mm - 1118 mm) | 1.53          |
| 5425XL   | 38" - 58" (965 mm - 1473 mm) | 1.67          |

#### Designed for Quick Release

1. Pull free end of release strap to disengage other end from retainer.
2. Pulling action rotates clasp to open position.
3. Disengaged clasp allows belt to separate.



## Electrician's Tool Belts

### Electrician's Leather Tool Belts

- **Leather** construction.
- Includes tool loops and chain-tape thong.



5207L

| Cat. No. | Size                          | Width          | Weight (lbs.) |
|----------|-------------------------------|----------------|---------------|
| 5207M    | 32" - 40" (813 mm - 1016 mm)  | 1-1/2" (38 mm) | .50           |
| 5207L    | 38" - 46" (965 mm - 1168 mm)  | 1-1/2" (38 mm) | .55           |
| 5207XL   | 46" - 54" (1168 mm - 1372 mm) | 1-1/2" (38 mm) | .60           |

### Electrician's Web Tool Belts

- **Lightweight web** belt.
- Includes **leather** tool loops and chain tape thong.
- **Friction** buckle.



5227L

| Cat. No. | Size                          | Width          | Weight (lbs.) |
|----------|-------------------------------|----------------|---------------|
| 5227M    | 32" - 40" (813 mm - 1016 mm)  | 1-1/2" (38 mm) | .39           |
| 5227L    | 40" - 48" (1016 mm - 1219 mm) | 1-1/2" (38 mm) | .40           |
| 5227XL   | 48" - 56" (1219 mm - 1422 mm) | 1-1/2" (38 mm) | .42           |

All dimensions are in inches and (millimeters).

**▲WARNING:** This is NOT an occupational protective belt.

**▲WARNING:** NOT for fall arrest or back support.



# Ironworker's Heavy-Duty Tie-Wire Belts

## Ironworker's Heavy-Duty Tie-Wire Belts

- **Leather** construction.
- Rugged 2" (51 mm) wide belt.
- Has separate reel-strap with its own buckle that lets you quickly and conveniently put on or take off a Klein tie-wire reel and optional pad without removing the belt or your tool pouch.
- Strong double-tongue buckle with keeper.
- Embossed basket-weave pattern.



5420L

| Cat. No. | Waist Size    | Belt Size Range               | Width      | Weight (lbs.) |
|----------|---------------|-------------------------------|------------|---------------|
| 5420S    | 36" (914 mm)  | 32" – 40" (813 mm – 1016 mm)  | 2" (51 mm) | .85           |
| 5420     | 40" (1016 mm) | 36" – 44" (914 mm – 1118 mm)  | 2" (51 mm) | .95           |
| 5420L    | 44" (1118 mm) | 40" – 48" (1016 mm – 1219 mm) | 2" (51 mm) | 1.05          |
| 5420XL   | 48" (1219 mm) | 44" – 52" (1118 mm – 1321 mm) | 2" (51 mm) | 1.15          |

Tie-wire reel available on page 206. Tie-wire pad available on page 155.

## Suspenders

### Suspenders

- Clips and slides are nickel-plated for corrosion resistance.
- Extra-strong belt clips have alligator teeth for added gripping power.
- One size fits all.



60222RB

| Cat. No.                       | Color   | Strap Width | Leather-Back Strap Spreader | Weight (lbs.) |
|--------------------------------|---------|-------------|-----------------------------|---------------|
| <b>Nylon-Web Suspenders</b>    |         |             |                             |               |
| 60208RB                        | rainbow | 2" (51 mm)  | adjustable                  | .53           |
| 60209R                         | red     | 2" (51 mm)  | adjustable                  | .53           |
| 60210B                         | blue    | 2" (51 mm)  | adjustable                  | .63           |
| <b>Elastic-Back Suspenders</b> |         |             |                             |               |
| 60222RB                        | rainbow | 2" (51 mm)  | non-adjustable              | .50           |
| 60224R                         | red     | 2" (51 mm)  | non-adjustable              | .50           |
| 60223B                         | blue    | 2" (51 mm)  | non-adjustable              | .60           |

All dimensions are in inches and (millimeters).

**▲WARNING:** This is NOT an occupational protective belt.

**▲WARNING:** NOT for fall arrest or back support.

Tool Pouches, Carriers,  
Belts & Suspenders



# Suspender Accessories

## Leather Belt Pads

- **Leather** pad is 4" (102 mm) wide.
- 3 snap-open straps permit easy, secure attachment to any belt up to 2" (51 mm) wide.
- Economical, yet rugged, durable, and highly comfortable belt pad.
- When sizing a belt to accommodate this pad, add 1" to 2" to the belt waist size.

| Cat. No. | Length       | Width       | Weight (lbs.) |
|----------|--------------|-------------|---------------|
| 87900    | 22" (559 mm) | 4" (102 mm) | .32           |
| 87902    | 30" (762 mm) | 4" (102 mm) | .50           |



87900

## Leather Cushion Belt Pads

- Deluxe **leather** pad is 4" (102 mm) wide.
- Thick **leather** back with four snap-open straps for easy attachment to any belt up to 2" (51 mm) wide.
- Sponge-padded **leather** liner has rounded edges, and is permanently stitched to the back.
- The most durable, most comfortable pad to wear, especially for prolonged work periods.
- When sizing a belt to accommodate this pad, add 2" to 4" to the belt waist size.

| Cat. No. | Length       | Width       | Weight (lbs.) |
|----------|--------------|-------------|---------------|
| 87904    | 22" (559 mm) | 4" (102 mm) | .99           |
| 87906    | 30" (762 mm) | 4" (102 mm) | 1.04          |



87904

## Leather/Synthetic Lamb's Wool Shoulder Pads

- **Leather** shoulder pads are removable and attached with **leather** straps.
- Pads can be easily positioned for maximum comfort.
- The surface that contacts the user's body is covered with synthetic lamb's wool, providing a soft cushion for shoulders and absorbing moisture for greater comfort.
- Sold in pairs only.

| Cat. No. | Length           | Width       | Weight (lbs.) |
|----------|------------------|-------------|---------------|
| 87918    | 11-3/4" (298 mm) | 4" (102 mm) | .24           |



87918

