

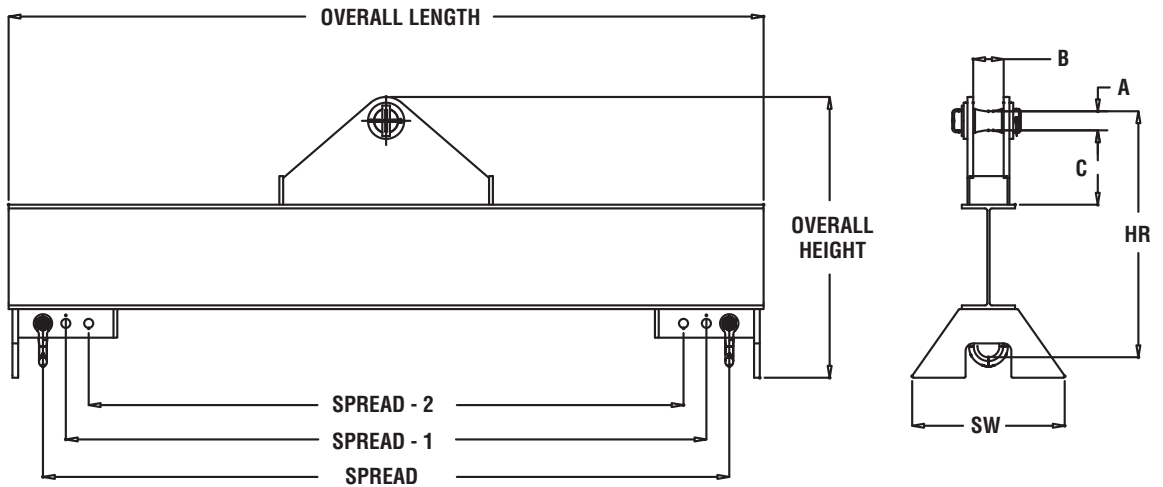
# Lifting Beams

## Model 20HC - High-Capacity Lifting Beams



### PRODUCT FEATURES:

- Heavy duty 'I' beam construction.
- Built in beam stands for easy storage.
- Pin bail to allow for quick attachment of large crane hook.
- Beams have three spreads for flexibility.
- Lifting shackles are standard.
- Complies with ASME standards.



### SPECIFICATIONS

Capacity (tons)	Model Number	Spread (ft.)	Dimensions (inches)							Weight (lbs.)
			Overall Width	HR Headroom	Overall Height	A	B	C	SW	
50	20HC-50-10	10	138	60.31	70.31					2881
	20HC-50-15	15	198	60.73	70.73	5	8	19.5	40	3841
	20HC-50-20	20	258	61.25	71.25					5161
65	20HC-65-10	10	138	61.38	70.51					3059
	20HC-65-15	15	198	64.5	73.63	5	8	19.5	40	4117
	20HC-65-20	20	258	67.8	76.93					5801
80	20HC-80-10	10	138	67.1	76.98					3663
	20HC-80-15	15	198	70.21	80.09	5.5	8	21.25	44	4808
	20HC-80-20	20	258	73.56	83.44					6674

Other sizes available, consult factory.